



**Whitewater Valley Railroad
Connersville, Indiana**

Two Hour Scenic Train Ride

**Earn the Railroading Merit
Badge**

**APRIL 26 – 28,
2024**

**RAILROADING MERIT BADGE
CAMPOREE**

ADULT LEADERS GUIDE

DRIVE HAND POWERED CARS - EXPLORE
LOCOMOTIVES – LEARN ABOUT RAILROAD
CAREERS – LEARN SWITCH AND HORN
SIGNALS - WORK TO LAY TRACK - AND
MUCH MORE

**WHITE WATER TRAILS
DISTRICT**

**ARRIVE BETWEEN 5:00 AND
8:30 PM ON FRIDAY APRIL 26,
2024**

**DEPART SUNDAY AFTERNOON
APRIL 28, 2024 AT 2:00 PM**

SAFETY:

Safety remains our first priority at this camporee. On-site medical support by Scout personnel will be available. Local police, fire department and hospital services will be notified of the camporee in advance and will be available for support if needed. At the camp site, Scouts are restricted to designated areas. The areas for Scouts are within the Scout camping area, in the Scout vehicle parking area, and in the stage area. **THE WHITEWATER RIVER AND ITS BANKS ARE OFF LIMITS TO ALL.** An aerial photo of the site is included at APPENDIX 'C' of this guide. When working on the railroad, scouts and scouters will follow instructions from railroad personnel are in charge when working on the railroad. Railroad equipment is heavy and high and requires climbing on steep ladders for some events. Always stay at least 10 feet away from the tracks, even when a train is not approaching. If crossing the tracks is required stop, look, and listen to be sure no trains are coming; then cross the tracks carefully by stepping over the rails. Do not step on the steel rails, which are slippery and narrow. When leaving a locomotive or rail car, always face the locomotive/car, hold onto the handrails on both sides and walk backwards down the steps. **ADDITIONAL "SPRING CAMPOREE RULES AND REMINDERS" ARE INCLUDED IN THIS GUIDE AT APPENDIX 'A'.**

LOCATIONS:

Campgrounds:

Robinson's Whitewater River Campground
1614 South State Road 121
Connersville, Indiana 47331

Railroad Depot:

455 Market St.
Connersville, IN 47331
Phone Number: (765) 825-2054



DIRECTIONS

Last year, my web mapper took me directly to the site. Travel takes about 1 hour from Colerain.

Whitewater Trails District

Units in central and eastern Butler County – Take I-74 west toward Indianapolis, Take exit 169 onto Harrison Brookville Rd (US-52) toward Brookville for 14 miles. In Brookville, pick up and follow IN-1 (straight and then a left) north for 16 miles toward Connersville. As you come into the south edge of Connersville, turn left (west) onto Veterans memorial drive and follow it for 1 mile. Turn left onto IN-121 and follow it south for 0.4 miles until you see the sign (see above) for **Robinson's Whitewater River Campground**.

Route in Indiana - Follow SR 27 through Oxford and College Corner to Liberty, Indiana. Follow the signs and turn west onto SR 44, follow that road to Connorsville, Indiana. In Connersville SR 44 becomes 5th Street; follow 5th Street west to the intersection with N. Grand Ave and turn left (the railroad station is on your left), drive south on N. Grand Ave about one mile, it becomes SR 121, and turn left into **Robinson's Whitewater Campground**.

DISTRICT CONTACTS:

Dale Sparks |513-503-2667 DSparks@envsi.com

DATES: Friday, April 26 to Sunday, April 28, 2024

WEBELOS:

Troops are encouraged to invite Webelos from their respective feeder Packs.

REGISTRATION:

The maximum number of Scouts and Scouters from the two districts participating in the camporee is 500. The limiting factor is the capacity of the train.

FEES:

The registration fee is \$30.00 for each person attending. The fee includes \$5.00 for the railroad ticket to Metamora.

RAILROAD MERIT BADGE INFORMATION

The railroad prepares information for the merit badge weekend and publishes it on the web site listed below. It includes an explanation of each of the 14 training sites and links to other relevant sites. A map of the training site is attached, and a handbook prepared by the railroad will be available for download. The handbook should be downloaded and printed by the each unit and a copy given to each Scout. The BSA merit badge book and railroad handbook will be used as study guides for the merit badge and will assist Scouts to pass the open book test. Please bring a signed blue card for every scout seeking the merit badge.

CHECK-IN:

Unit arrival times on Friday April 26 are from 5:00 PM to 8:30 PM at Robinson's Whitewater River Camp Ground. Check-in is the first activity and must be completed before any other activity. Greeters will direct vehicles to areas to unload Scouts, park vehicles and park trailers. Unit trailers will park at the site assigned to the unit.

UNIT SUBMITTALS AT CHECK-IN:

Put the following documents in a One Gallon Zip Lock bag with your unit number in big black letters on the bag. This will be collected as soon as you arrive at the campgrounds

a. **WAIVER OF LIABILITY AND HOLD HARMLESS AGREEMENT**

The railroad requires every person attending the Camporee to have this form properly completed, signed and submitted on Friday evening. Failure to submit the form will prevent that person from attending training on Saturday or entering railroad property.

THE WAIVER FORM IS INCLUDED IN THIS GUIDE AT APPENDIX 'B'.

b. **A Merit Badge Blue Card** for each Scout. The blue card must be completed front and back and include the title of the merit badge (Railroading), Scout's name, address, Troop number, District, Council, Scoutmaster signature, and date.

c. **A roster of all attendees who arrive at the site,** to include the names of all Scouts and Scouters.

CAMP SITE RESTRICTIONS:

Units will be registered as they arrive at the Scout camping area on the Robinson campground. Unit campsites will be assigned as units arrive based on the number of people attending. Only scout trailers may be parked at the unit camp sites. All other vehicles must be parked in the designated parking area. Vehicles should remain at the campground and not be driven to the railroad training area due to very limited parking there. The Robinson campground is a commercial camping facility and will be hosting other campers that weekend. There are only three areas that Scouts and Scouters are permitted to use: 1. the Scout camping area which includes the flag pole; 2. the vehicle parking area; and 3. the stage and audience area. An aerial photo of the site is included in the appendix of this guide. **THE "AERIAL PHOTO OF CAMP SITE WITH LOCATIONS MARKED" IS INCLUDED IN THIS GUIDE AT APPENDIX 'C'.**

EVENTS:

Events Friday evening include registration upon arrival and briefing for senior patrol leaders and Scoutmasters at the stage area. There will be two briefings, one by railroad personnel and the other by a district representative. Saturday morning will include flag raising, briefing and train ride to the railroad yard for all day training (bring lunch and canteen with water). Railroad personnel will operate 14 training sites until scheduled afternoon departure and return to the campground. Evening events will include flag lowering, campfire, skits and Order of the Arrow call out. Sunday will include flag raising, briefing, religious services, train ride to the railroad station to buy a ticket, and train ride to Metamora. Scouts will have lunch upon arrival (bring lunch and canteen with water), tour Metamora on your own and return to the camp site by train. Scouts will complete their merit badge tests during the train rides. Units will out-process by having their camp sites inspected, submit completed camporee evaluation forms in exchange for their patches and blue cards. **THE "SCHEDULE OF EVENTS" IS INCLUDED IN THIS GUIDE AT APPENDIX 'D'.**

SCOUT EQUIPMENT:

Scouts should bring/wear the following on the train Saturday and Sunday:

- Boots
- Rain gear when rain is forecast
- Coat for forecasted temperatures
- Railroad pamphlet prepared by the railroad
- Merit badge book
- Pens & pencils for note taking
- Canteen filled with water
- Lunch

DESIGNATING PATROLS FOR RAILROAD TRAINING:

The railroad has requested that fourteen equal sized patrols be designated for rotation through the 14 railroad training sites. A tentative plan is to select 14 senior patrol leaders and assign each one of them to lead one of the "railroad training patrols". The approximate number of Scouts assigned to each "railroad training patrol" will be determined by dividing the total number of Scouts in attendance by 14. Existing patrols from troop units will remain together as a unit and be assigned to a "railroad training patrol" based on the size of the unit patrol. Unit patrols will be cross leveled between "railroad training patrols" in order to achieve the approximate desired size in each of the 14 patrols. The senior patrol leader for each "railroad training patrol" will be given a clip board with a blank roster and will be asked to write the name of each Scout in his or her training patrol. At least two adult leaders will be assigned to accompany each "railroad training patrol" for all training sites. This tentative plan will be reviewed and discussed at the Friday evening leader meeting.

MERIT BADGE TEST:

On Sunday Scouts will be with their home unit for the train ride to Metamora. The merit badge test will be issued on the train. Unit Leaders will be given the test key and will grade their Scouts' tests to determine the Pass or Fail. It will be an open book test using the railroad handbook and the BSA merit badge book. The Conductor will be available to answer questions. Only those Scouts with no interest in earning the merit badge should fail the test. The Counselor part of the Blue Cards will already be stamped by railroad personnel and Unit Leaders will complete the blue card by signing them for those who successfully completed the test.

FOOD:

Each Troop must bring their food for all meals. Plan to have breakfast completed and clean-up completed before the flag raising and briefing on both Saturday and Sunday. Pack the Troop's lunch in a designated cooler for loading on the train on both days.

WATER: Water is available at the camp site from hydrants.

SANITARY FACILITIES:

Portable latrines will be stationed near the Scout camping area. There are no operational rest rooms on the train. There are flush toilets in Metamora. **THE PERMANENT LATRINES AND SHOWERS IN THE CAMPGROUND ARE OFF-LIMITS TO ALL SCOUTS AND SCOUTERS.**

FIRES:

Ground fires are not permitted at the campground. Above ground metal fire rings may be used. Firewood cannot be transported to the campground in accordance with state law. Firewood can be purchased at the campgrounds for a nominal fee. Units must take their campfire ashes with them when they leave.

TRASH:

Each unit is responsible for taking away its own trash and ashes and for policing its area prior to inspection and clearance by the camporee staff.

LOST & FOUND:

Camporee headquarters will serve as a lost and found site for the event. The headquarters site will be designated at the Friday evening and Saturday morning briefings.

CAMP FIRE:

A campfire will be held Saturday evening. Skits to be performed at the campfire must be submitted to the camporee committee by 6:00 PM Saturday evening for approval. The campfire preparation, monitoring, and extinguishing and the host for the campfire will be done by volunteer units.

ANIMALS AT THE CAMPGROUND:

There are many animals at the camp site. Do not touch, chase or otherwise disturb the rabbits, chickens, ducks, dogs, cats, peacocks, donkeys and any other animals.

ORDER OF THE ARROW:

An Order of the Arrow call out will follow the campfire. Scoutmasters may request their Scouts to be called out. Please contact the following and provide your unit number and the number of Scouts to be called out. Coordination between the units and the O/A will be arranged.

Contact: Terry Dalrymple 513-324-6243 dalrymple847@aol.com

CAMPOREE EVALUATION:

Scouts and Scouters in each unit will be invited to complete an evaluation form for the camporee. Comments will assist in the planning and conduct of future camporees. Forms will be available at the camporee. **THE "EVALUATION FORM" IS INCLUDED IN THIS GUIDE AT APPENDIX 'E'.**

UNIT OUT PROCESSING:

Each unit will notify the camporee staff when its campsite is clean and ready for inspection. Units are encouraged to clear their campsites and have them inspected prior to departure for Metamora to expedite early departure from the campsite when the units return. Trailers are to be removed from a site prior to inspection.

After a unit camp site is approved and prior to departure, each unit will submit complete camporee evaluation forms, receive its plastic bag with patches and blue cards and then depart the camporee.

EARLY DEPARTING UNITS:

At other years' camporees, some units chose to leave Saturday evening and some units chose to leave directly from Metamora Sunday afternoon. Early departing units must advise the camporee staff at the Friday evening briefing that they intend to leave early. These units should also plan on their scouts completing the merit badge independently.

UNIT SUPPORT TO THE CAMPOREE:

Attending units are asked to provide support to one or more camporee activity listed below. Please notify the district contact listed above by Monday 4/22 of the activities and the support that your unit will perform.

- On-site medical support
- Unit registration and parking control on Friday evening
- Prepare and post signs at the camp site before units arrive (parking, camping, trading post, stage area)
- Support for the Friday evening leader meeting:
 - briefing by a youth
 - lighting
 - sound system
 - tables
 - cracker barrel food
- Bugler Saturday and Sunday morning
- Flag raising and briefing by youth Saturday morning
- Flag lowering Saturday evening
- Saturday noon meal planning, purchase and preparation for railroad personnel
- Camp fire preparation and extinguishing
- Camp fire master of ceremonies
- Order of the Arrow call out by OA
- Church services Saturday and/or Sunday
- Flag raising and briefing by youth Sunday morning
- Final inspection of sites and clearance approval
- Camporee photographer
- Trading Post (the railroad will designate an indoor space)

APPENDIX 'A'

SPRING CAMPOREE RULES AND REMINDERS

Scoutmasters, please review with your Scouts prior to the camporee.

Campground details

- Campsites will be assigned to a unit the week before the camporee. NO ground fires are permitted. Bring your own elevated fire pit or barrel. Do not bring your own wood. Firewood can be purchased at the campground for a nominal fee. Units must take their campfire ashes with them when they leave.
- No open flames are permitted in tents.
- Troops are responsible for packing out their own trash (ashes, trash, garbage). **Remember the outdoor code – LEAVE NO TRACE.**
- **NO** adult beverages or smoking in camp.

Safety/First Aid Details

- The Whitewater River is deceptively fast running. **NO** Scouts or Scouters are to be within 100 feet of the river.
- Hiking boots are essential for safety. **NO** open-toed shoes. **NO** Crocs.
- **NO** horse playing on or around the tracks and the railroad equipment. Stay ten feet away from the tracks at all times except when crossing tracks. Do not step on the steel rails. They are slippery and narrow and the result may be a painful fall.
- When leaving a locomotive or rail car always face the locomotive/car, hold onto the hand rails on both sides and walk backwards down the steps.
- Bring extra water for adequate hydration for the training Saturday and the train ride Sunday.

Scouting Details

- Blue cards **MUST** be completed and brought by each troop and turned in upon arrival.
- Merit Badge processing is the responsibility of each respective troop.
- Waivers must be presented complete upon arrival at the campground Friday evening.
- Adults are needed to accompany patrols during the training on Saturday and the train ride on Sunday.
- All camp site buildings, including any inoperative portable latrine, are off limits.

THE LAW OF THE CAMP IS THE SCOUT LAW!

APPENDIX 'B'

WAIVER OF LIABILITY AND HOLD HARMLESS AGREEMENT

Please Read Carefully

In consideration for receiving permission to participate in any volunteer activity of the Whitewater Valley Railroad, Inc. ("Railroad"), its successors and assigns, I hereby release, waive, discharge and covenant not to sue, Railroad, its members, officers, agents, servants, family members, estate or employees (hereinafter referred to as releasees) from any and all liability, claims, demands, actions and causes of action whatsoever arising out of or related to any loss, damage, or injury, including death, that may be sustained by me, or any of the property belonging to me, whether caused by the negligence of the releasees, or otherwise, while participating in such activity, or while in, on or upon the premises where the activity is being conducted.

I understand that this waiver and hold harmless agreement is in full force and effect until revoked by me in a writing delivered to the Railroad.

Dated this _____ day of _____ 20 ____

Volunteer: _____

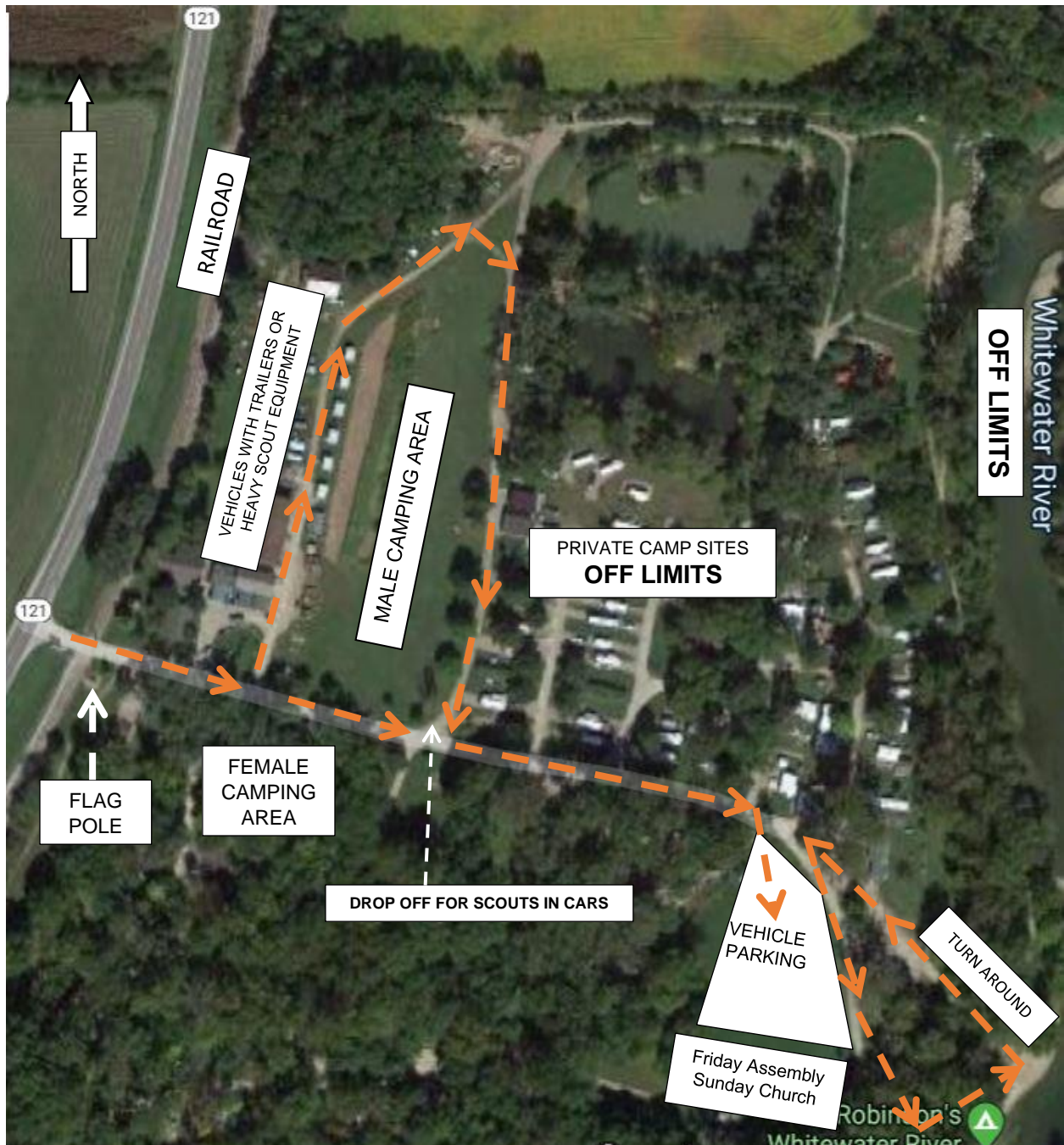
Printed Name _____

Parent or Legal Guardian
If Volunteer is a Minor

Printed Name

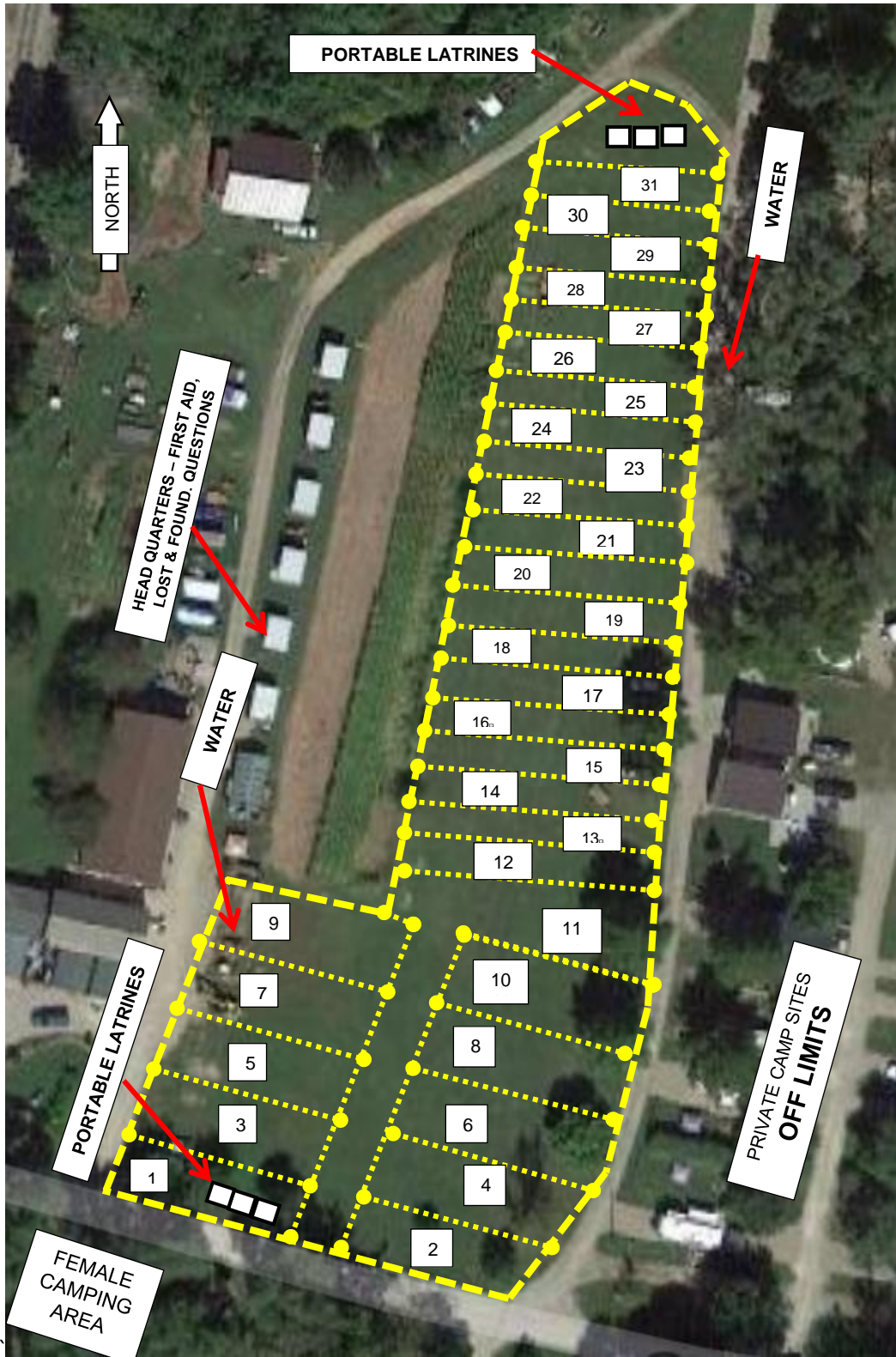
APPENDIX 'C'

AERIAL PHOTO OF CAMP SITE WITH LOCATIONS MARKED



APPENDIX 'C'

AERIAL PHOTO OF CAMPING AREA



APPENDIX 'D'

SCHEDULE OF ACTIVITIES

**RAILROAD SPRING CAMPOREE APRIL 26, 27 & 28, 2024
CONNERSVILLE, INDIANA**

NOTE: TRAIN TIMES ARE ESTIMATED

FRIDAY UNIFORM – CLASS “A”

5:00 PM Units arrive Friday Evening 5:00 to 8:30 PM
9:00 PM Scoutmaster and Senior Patrol Leader meeting
11:00 PM Lights out

SATURDAY UNIFORM – CLASS “A” FOR TRAINING CLASS “A” FOR CAMP FIRE

6:00 AM Reveille followed by breakfast
7:30 AM Flag raising and briefing for all in attendance
8:30 AM Train arrives for ride north to the rail yard and all day training
(Everyone takes their lunch. Camporee staff furnishes lunch for the instructors)
Noon Lunch from 12:00PM to 1:00 PM
1:00 PM Training resumes
4:30 PM Board the train for return trip to campground.
7:30 PM Flag lowering
8:30 PM Evening meal and activities completed
9:00 PM Camp fire for all in attendance
11:00 PM Lights out

SUNDAY UNIFORM – CLASS “A”

6:30 AM Reveille followed by breakfast
8:00 AM Flag raising and briefing for all in attendance
8:30 AM Church service
9:00 AM Board the train and depart north to the railroad station to buy a ticket for the train
ride south to the town of Metamora (Everyone takes their lunch) (Take merit
badge test during ride)
10:00 AM Train departs for Metamora
11:00 AM Train arrives at Metamora
11:30 AM Lunch
1:00 PM Train departs Metamora
(Complete merit badge test during ride)
2:00 pm Train arrives at campground – units depart for home

APPENDIX 'E'

EVALUATION FORM

EACH UNIT IS REQUESTED TO COMPLETE ONE OR MORE EVALUATION FORM AND EXCHANGE THEM FOR THEIR BLUE CARDS DURING OUT PROCESSING

PLEASE PROVIDE YOUR OPINION (use back of form for additional comments)

WHAT DID YOU LIKE ABOUT THE SPRING CAMPOREE?

WHAT DID YOU **NOT** LIKE ABOUT THE SPRING CAMPOREE?

YOUR SUGGESTIONS FOR A FUTURE RAILROADING CAMPOREE?

A large, empty rectangular box with a thin black border, intended for the user to write their suggestions for a future railroading camporee. The box occupies most of the page below the header.

APPENDIX 'F'

LAYOUT OF RAILYARD

